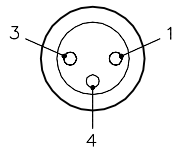
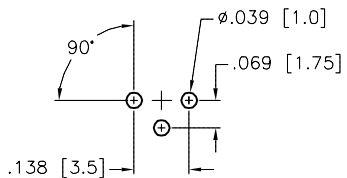


MALE END VIEW

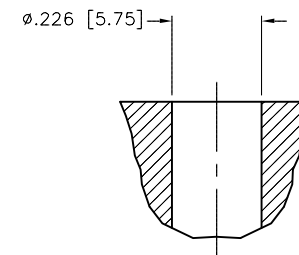
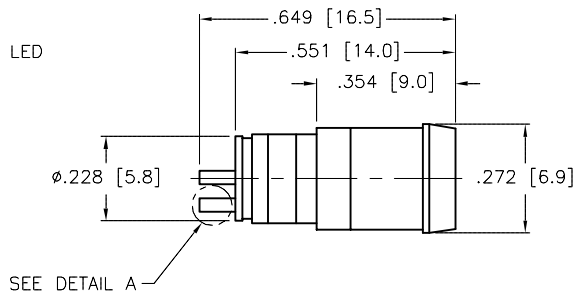
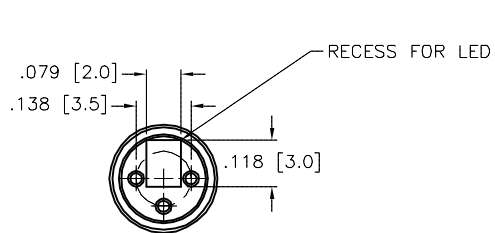


BOARD LAY-OUT

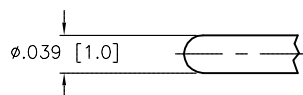


SPECIFICATIONS

CONTACT CARRIER MATERIAL/COLOR	NYLON/CLEAR
CONTACT MATERIAL/PLATING	BRASS/GOLD
HOUSING MATERIAL/PLATING	BRASS/NICKEL
RATED CURRENT [A]	4.0 A
RATED VOLTAGE [V]	60 VAC/75 VDC
TEMPERATURE RANGE	-30°C to +80°C (-22°F to +176°F)



BORE DIAMETER FOR MOUNTING



DETAIL A
SCALE: 2.5=1

SOURCE DRAWING - FOR REFERENCE ONLY

RELATED DOCUMENTS		3RD ANGLE PROJECTION		THIS DRAWING IS CONFIDENTIAL AND THE PROPERTY OF TURCK INC. USE OF THIS DOCUMENT WITHOUT WRITTEN PERMISSION IS PROHIBITED.		3000 CAMPUS DRIVE MINNEAPOLIS, MN 55441 1-800-544-7769 (763) 553-7300 (763) 553-0708 fax www.turck.us		
1. 2. 3. 4.				DRFT IK DATE 04/14/99 APVD SCALE 2=1.0		DESCRIPTION ESHM 3P (10/BAG)		
MATERIAL SEE SPECIFICATIONS		ALL DIMENSIONS DISPLAYED ON THIS DRAWING ARE FOR REFERENCE ONLY		UNIT OF MEASUREMENT INCH [MILLIMETER]		IDENTIFICATION NO. E3011		
FINISH SEE SPECIFICATIONS		CONTACT TURCK FOR MORE INFORMATION		DO NOT SCALE THIS DRAWING		REV A		
A	DRAWING RELEASE	JBJ	12/11/03	FILE: E3011				SHEET 1 OF 1
REV	DESCRIPTION	BY	DATE	ECO NO.				